

# Roblon High Voltage Pulling Rope

For pulling high-voltage overhead lines over long spans and distances in environments up to 800 kV.

For working live line.

## Key features

- Non-conductive, even under wet conditions
- Does not corrode
- Torque-balanced
- Lightweight
- Can be supplied with spliced eyes
- Splicing and inspection instruction available
- Standard Roblon Certificate of Conformity (dimension and minimum breaking load)
- Batch certificate on request
- Designed to fulfil IEC62192

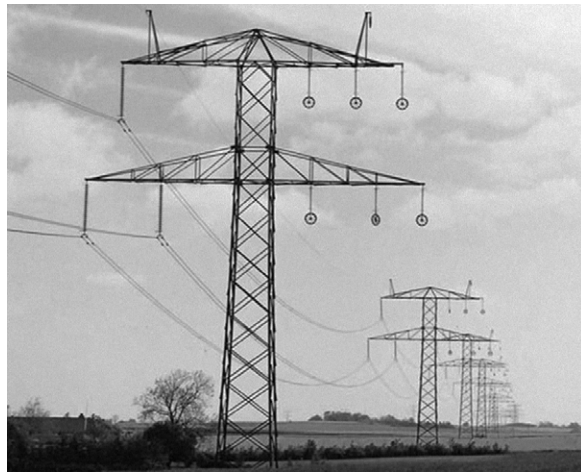


Roblon

## Technical data

Diameter (mm)	Min. breaking strength (kN)	Weight per metre (g)
9.00	35	68
13.85	85	164
16.00	130	230
20.00	200	343

Dimensions and breaking strengths can be customized to meet special requirements

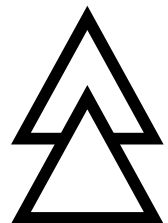


One transmission line is ready for stringing, whilst the other is live.

### Optional

Roblons coated lines can for some dimensions be supplied with spliced eyes - or glued-on fittings, if requested.

Below please see some examples of these terminations. Please ask Roblon for more information.



Spliced eye



Glue-on fitting

